

CHRIST COMMUNITY CHURCH

CONGREGATIONAL MEETING - AUGUST 8, 2021



AGENDA

- Call to Order
- Prayer
- Election of Moderator
- Election of Clerk
- Reading of the Essentials of the Faith
- Report from the CAAT (Church Acquisition Advisory Team)
- “Make a Seat at the Table” Capital Campaign
- Prayer Time
- Adjourn

2008 – 2021

- Dec 2008—Organizing Dinner
- Sep 2009—Kids R Kids
- Jan 2010—Fisher Elementary
- Aug 2010—First Members
- Oct 2012—Here We Are
- Oct 2014—We Start to Save
- Oct 2018—Capital Campaign Begins
- Jul 2021—The Lord Opens a Door

OPEN DOOR

- SWCPN—Full Approval
- Surveyed TEs & REs in the NTP—Full approval
- Pastors in Prosper & Celina—Full Approval
- Survey of Congregation—96% Approval

96% WITH INTENSITY

- The distance is not a concern for me at all. [A] lot of great potential.
- No doubt it's a gorgeous church with lots of room to grow, but my concern is the financial side of it (debt).
- The church property is beautiful and historic. Make the move.
- I don't think the location is a problem for [us].
- Yes!!!!

96% WITH INTENSITY

- I'm excited for the opportunities that this property would allow for.
- I would prefer a presence in Frisco, but given the [RE] market, this is probably a wiser choice.
- Love it!!
- This seems like a great opportunity especially since Prosper is growing so much. . . .
- Personally love the location—straighter shot from house.
- It's beautiful! What a wonderful opportunity.

ROMANS 12: 2

- Do not be conformed to this world, but be transformed by the renewal of your mind, *that by testing you may discern what is the will of God. . . .*

CHURCH ACQUISITION ADVISORY TEAM (CAAT)

- Chuck Morgan, Chair
- Mike Bitting, Vice Chair
- Bill Enszer
- Jack Lenhart

205 SOUTH CHURCH STREET, PROSPER

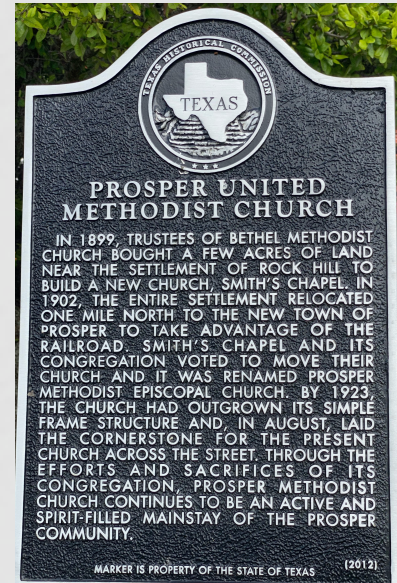


AERIAL VIEW



DETAILS

- Historic Church Built in 1924: Extremely well maintained
- Attached Education Wing Built in 2003: Refurbished 2021
- Parking Lot Built in 2016: 94 spaces
- Total Space All Buildings: 17,800 SF
- Sanctuary: 250
- Total Land: 4.4+ Acres
- Elevator
- Fenced and covered playground



CURRENT STATUS

- LOI presented July 28
 - 60 days to inspect and be 100% satisfied
 - If 100% satisfied, closing within 30 days
 - Would not take possession until 7/1/22
 - During lease-back period, Prosper UMC pays:
 - Our mortgage
 - Property insurance
 - Utilities
 - Maintenance

WHAT'S NEXT?

- Waiting on Seller's Response
 - Counter Offer
 - Request for Best and Final Offer

IN THE MEANTIME

- Bill Enszer working with potential lenders
- Jack Lenhart working with potential inspection firms
- Mike Bitting leading the capital campaign

CAPITAL CAMPAIGN



MAKE A SEAT AT THE TABLE

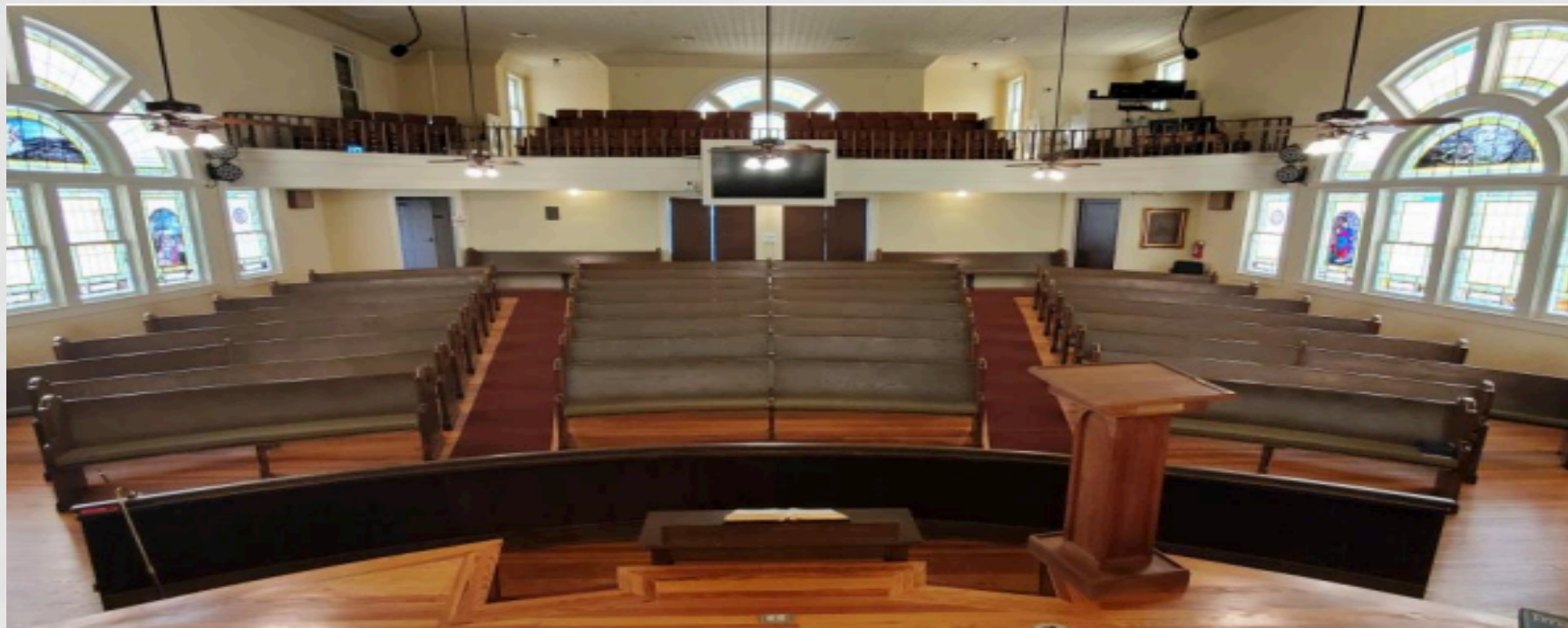
- Year 1 (2018)
 - No specific building to pursue
 - No down payment
 - Year 1 we asked for \$250,000 - and you gave \$342,500
- Total contributed for Phases 1-3: \$807,260



MAKE A SEAT



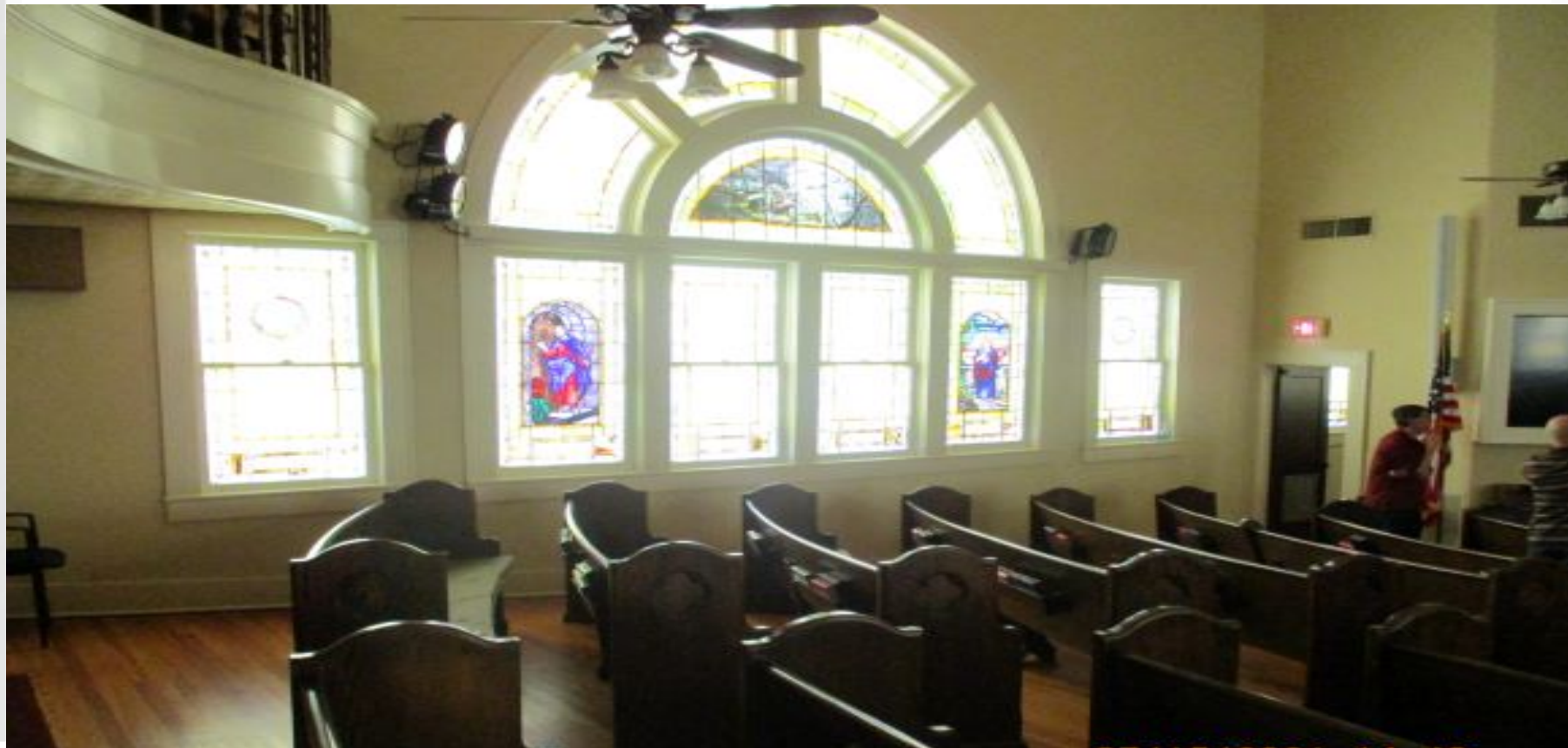
SANCTUARY FROM FRONT



SANCTUARY FROM THE LOFT



SANCTUARY



SANCTUARY LOWER LEVEL



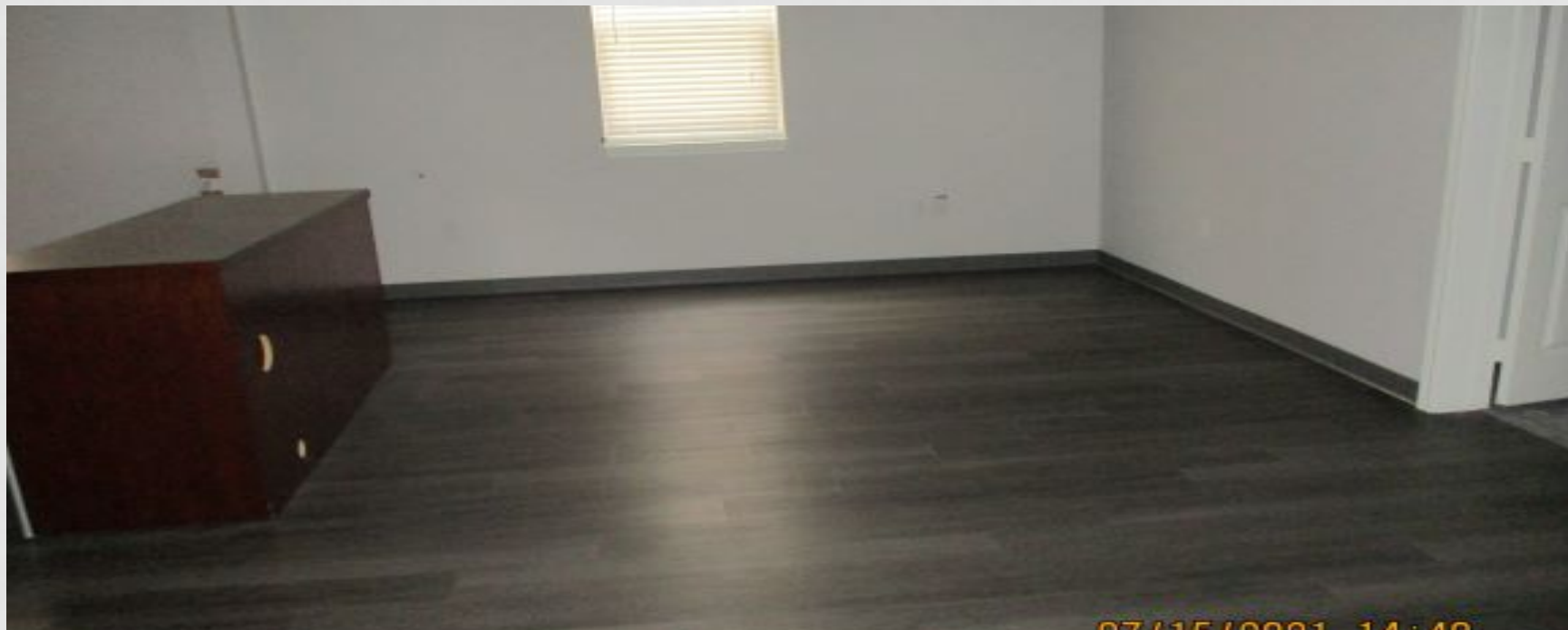
EDUCATION WING FOYER



EDUCATION WING – MULTIPURPOSE



EDUCATION WING - TYPICAL OF MULTIPLE CLASSROOMS



07/15/2021 14:40

PARSONAGE



PARVIN HOUSE/OFFICES



PLAYGROUND



PARKING LOT – 94 SPACES



CAPITAL CAMPAIGN – PHASE 4 (OCT '21 THROUGH SEPT '22)

- 100% of Officers have already committed
 - Officers pledge total: **\$109,500** (31% of goal)
- Phase 4 goal - \$350,000



HOW WILL MY PLEDGES BE USED?

- If God opens the doors to 205 S Church Street
 - Move-in expenses
 - Signs, chairs, tables, upgrades, etc.
 - Budget buffer for next couple years
 - Estimated budget increase of ~\$100,000/year
 - We expect growth but growth takes time
 - Debt reduction
 - Your pledge frees up funds we already have as down payment
- If God has other plans
 - The funds will position us for the home He wants us in

HOW DO I PAY MY PLEDGE?

- Pledges can be one-time donations or multiple donations over the term of the campaign
- Pledges can be paid in cash, check or stocks
 - Cash - place in an envelope marked “Capital Campaign”
 - Checks - write “Capital Campaign” in the memo section
 - Stock - See Bill Enszer for instructions on how to donate stock
- Please fulfill pledges by Sept 30, 2022

WHAT'S NEXT



- Pickup information/pledge packet on your way out of church today
 - For those not here today the packet will be mailed to you this week
- Prayerfully consider your pledge
- Bring your pledge card to worship on **August 22nd** so that we can commit together and celebrate as a family





TESTIMONY

PRAYER



A top-down view of a formal place setting on a dark wooden table. The setting includes a blue and white striped placemat, a white dinner plate with a gold rim, a white napkin with two silver forks, and a silver knife and spoon. The text "Make a Seat At the table" is overlaid on the plate.

Make a
Seat
At the table