

# Grace

(based on the recording by CityAlight)

Words and Music by  
Niki Shepherd, Jonny Robinson  
and Rich Thompson

♩=96

## INTRO

C Am G C Am G



## VERSE

8 C C C/E F C



1. Your grace that leads the sin - ner home, from death to life for -  
(2. Your) grace that reach - es far and wide, to ev - 'ry tribe and  
(3. Your) grace that I can - not ex - plain, not by my earth - ly  
(4. Let) praise rise up and o - ver - flow; my song re-sound for -

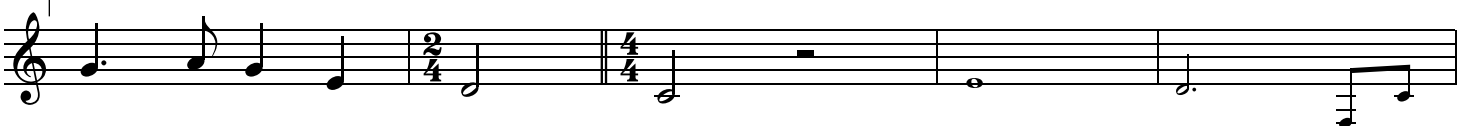
13 Am G<sup>SUS</sup> G C C/E F



-ev - er. And sings the song of right - eous - ness by  
na - tion, has called my heart to en - ter in the  
wis - dom. The prince of life, with - out a stain, was  
-ev - er. For grace will see me wel - comed home to

## TURNAROUND

18 C G C Am G



blood and not by mer - it.

23 C 2, 3, 4. C G<sup>sus</sup> G<sup>7</sup> C CHORUS 1a C C/E

2. Your joy of Your sal - va - tion. By grace I am re -  
 trad - ed for this sin - er.  
 walk be-side my Sav - iour.

28 F C G<sup>sus</sup> G C C/E

-deemed. By grace I am re - stored. And now I free - ly

32 F C G<sup>7</sup> G TURNAROUND

3rd time to Coda ⊕

walk in - to the arms of Christ, my Lord.

35 Am G G<sup>7sus</sup> 1. C D.S. 2. C D.S. al Coda

3. Your 4. Let

⊕ Coda CHORUS 1b C N.C.

39 C

Lord. By grace I am re - deemed. By grace I am re -

43

-stored. And now I free - ly

45



walk in - to the arms of Christ, my Lord.