

# Faith Presbyterian Church Congregational Meeting

August 2021



# Overview

1. Mission: Why Do We Exist?
2. Evaluation: How are We Doing?
3. Strategy
4. Ministry Plan and Future Planning
5. Building Update: Family Life Center
6. Budget

# Mission: Why do we exist?

**Our mission is to participate in the ongoing ministry of Christ to Gainesville and the surrounding community.**

Everything we do must be centered on Christ and related to his mission.

► *“He is the head of the body, the church...that Christ might be first in all things” Colossians 1:18*

# Marks of a Christ-Centered Church

- ▶ **Missional:** Sent on Christ's redemptive mission
- ▶ **Sacramental:** Empowered by Christ's presence
- ▶ **Confessional:** Formed by our beliefs about Christ
- ▶ **Communal:** Devoted to caring for and edifying one another as the body of Christ
- ▶ **Evaluating:** How are we doing in these four?



# Ministry Plan 2021-2022



## ► Three Main Priorities

1. Leadership Development
2. Reconnecting Community
3. Intentional Mission

# Theme: The Redemptive Household

## Acts 2:42-47

[42] And they devoted themselves to the apostles' teaching and the fellowship to the breaking of bread and the prayers. [43] And awe came upon every soul, and many wonders and signs were being done through the apostles. [44] And all who believed were together and had all things in common. [45] And they were selling their possessions and belongings and distributing the proceeds to all, as any had need. [46] And day by day, attending the temple together and breaking bread in their homes, they received their food with glad and generous hearts, [47] praising God and having favor with all the people. And the Lord added to their number day by day those who were being saved.

# Leadership Development: Session

- ▶ **Session's Role:**  
Shepherding/Discipleship/  
Governing
- ▶ Oversees
  - ▶ Discipleship/Christian Education
  - ▶ Community Groups
  - ▶ Missions Local
  - ▶ Missions Global
  - ▶ Staff oversight
  - ▶ Target Ministries: men/women,  
children, youth, college,  
grad/pro, empty nesters





# Leadership Development: Deaconate

## ► Deacon's Role: Communion of the Saints, "One-Anothering"

- Mercy
- Nursery/Childcare
- Welcome
- Sunday Worship Administration
- Sunday fellowship
- A/V
- Fellowship
- Facilities
- Finance





# Leadership Nominations - October

- ▶ **Nominations for office of elder**, with season of apprenticeship
- ▶ **Nominations for office of deacon** and role of **deacon assistants**
  - ▶ Deacon is a spiritual office focused on the “communion of the saints”. This office is charged with facilitating the “one anothering” of the body of Christ.
  - ▶ These are spiritual functions that directly relate to being the household of God.
  - ▶ Officers bear a special responsibility of leading and governing the life of the church.
  - ▶ Deacon assistants are non-ordained godly men and women assisting the deacons in facilitating the “communion of saints.”
    - ▶ Our denominations Book of Church Order 9-7 recognizes such assistants.
    - ▶ Phoebe in Romans 16:1 is called a deaconess. Whether Paul implied a particular role or simply wanted to identify her as a servant, it is clear that scripture sees women participating in service/diaconal roles
    - ▶ 1 Timothy 3:12 implies that deacon is an office reserved for called men.

# Deaconate

- ▶ Encourage and Develop Leaders to Lead Ministry Teams
- ▶ Form board of 7-9 members, including current deacons
- ▶ Meet Monthly
  - ▶ Pastor Nelson will lead meeting until we can find a chairman
  - ▶ First half of meeting training and development
  - ▶ Second half of meeting deacon business/team reports

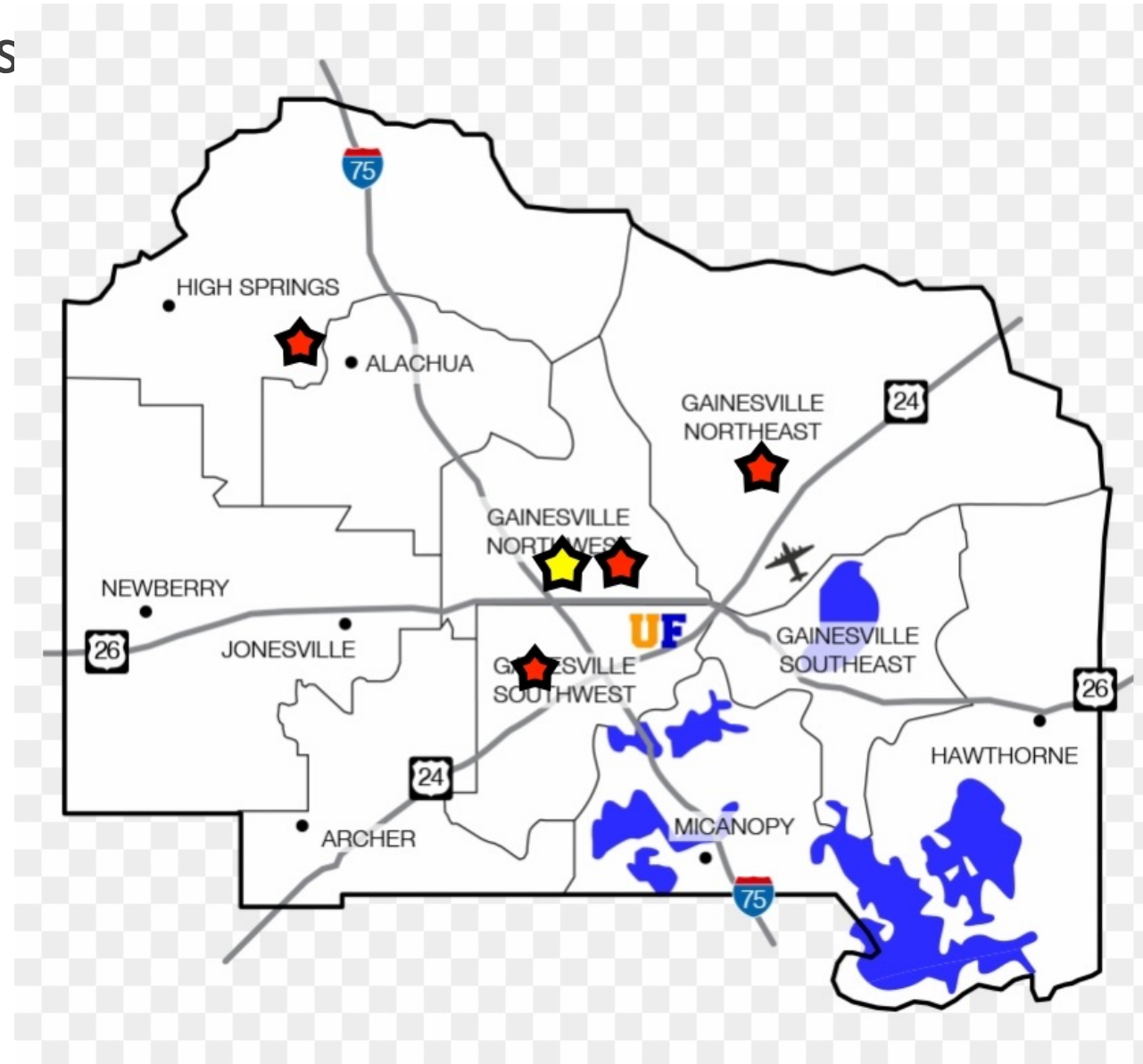
# Ministry Plan 2021-2022

## ► Three Main Priorities

1. Leadership Development
2. **Reconnecting Community**
3. Intentional Mission

# Communal: Reconnecting Community

## Community Groups





# Community Groups

- ▶ Organize groups **based on geography** (NW, NE, SW, Central)
- ▶ Meet with **similar frequency** (2x per month, occasional social/outreach/mercy events). Possibility of a weekend group, not to conflict with other church events. **Starting after Labor Day**
- ▶ Encourage frequent **meals** at groups when possible
- ▶ **Roles in Each Group:**
  - ▶ Facilitator: leads prayer and study
  - ▶ Host: Opens home to the group for meetings
  - ▶ Mercy: Facilitates mercy to needs in group and organizes mercy/service events outside of church
  - ▶ Outreach coordinator: Welcomes and invites visitors, plans outreach events to neighbors and co-workers

# Sunday Night Discipleship

- ▶ Church-wide gatherings every other Sunday
  - ▶ 5:30pm - 7:30pm
  - ▶ Starting 9/12
- ▶ Catered meal together, pay a small fee to offset the cost
  - ▶ Adults meet to study
  - ▶ Youth Group (Middle and High School)
  - ▶ Club 4Five
  - ▶ Childcare



# Fellowship Events

- ▶ **Church Work Days**
  - ▶ Fall Work Day, October 16
  - ▶ Spring Work Day, April 3
- ▶ **Expand S'mores and Snores** slightly to make it a mini-fall retreat
  - ▶ November 12<sup>th</sup> and 13<sup>th</sup>
  - ▶ Devotionals with music (evening/morning)
  - ▶ Involve youth
- ▶ **Churchwide Retreat**, February 18-20 in late winter or early spring
- ▶ **Fellowship Events:**
  - ▶ Tailgate Party: September 11 (11am - 5pm) UF at S.FL
  - ▶ Thanksgiving meal November 28<sup>th</sup> 5pm
  - ▶ Spring Event, March TBA

# Ministry Plan 2021-2022

## ► Three Main Priorities

1. Leadership Development
2. Reconnecting Community
3. **Intentional Mission**



# Missional

- Local Missions

- Develop **outreach team** consisting of outreach coordinators in community groups and others interested in reaching Gainesville.
- Intentional outreach to neighbors/co-workers through Community Groups and Community Group events.
- Combine outreach events with local service projects
- Plan churchwide outreach events:
  - Team will determine best outreach events which could include Live Nativity, Easter Outreach, etc.

# Missional

- Global Missions

- Form a **global mission's team** under Session oversight to connect to our current global missions partners: get updates and prayer requests.
- Team will explore potential of local church plants
- Team will explore future missions trips in future years.



# Sacramental: Worship

- ▶ COVID response and future response discussion
- ▶ Outdoor Tent improvements
- ▶ Search for new music director
- ▶ New: 20 minute sermon discussion for those interested. Held in a corner of the worship center (about 15 minutes following the service)
- ▶ Ordination service for Cord, likely following November Presbytery Meeting

# Target Ministries

- ▶ Men's Ministry
  - ▶ Max leading new team
- ▶ Women's Ministry
  - ▶ Women's Bible Study
  - ▶ See Newsletters
- ▶ Children's Ministry
  - ▶ Teresa Isastia and Amanda Short
- ▶ Youth (FYM-Faith Youth Ministry)
  - ▶ 2 Parenting Seminars
  - ▶ Cord's leadership!



# Target Ministries

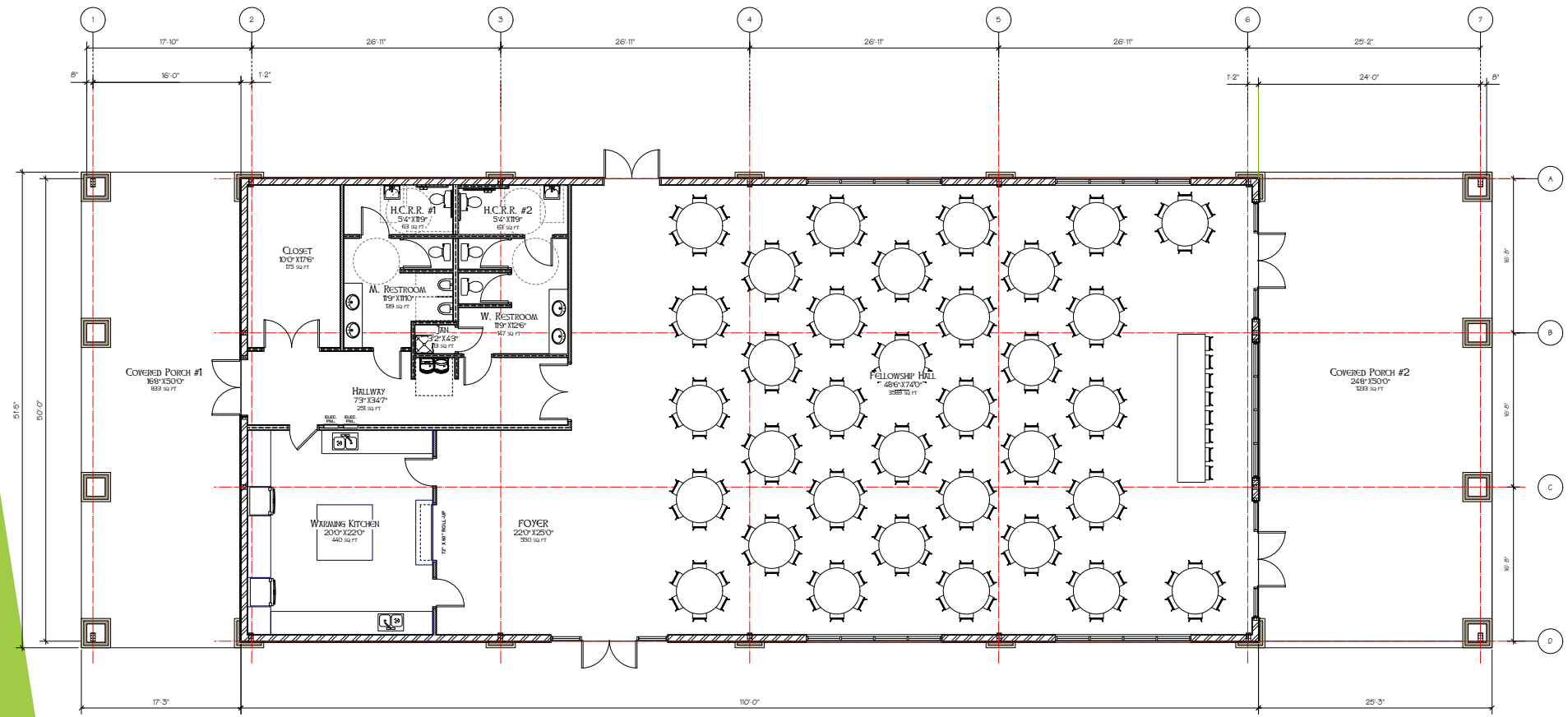
- ▶ College
  - ▶ Outreach to Santa Fe
  - ▶ Cord Reaching out to UF students
- ▶ Grad/Pro
  - ▶ Jeremiah leading group
  - ▶ Lunch/Welcome Event Labor Day 9/6
- ▶ Empty Nesters
  - ▶ Bill Lawrence facilitating weekly group

# Family Life Center

- ▶ Brief History and Overview
  - ▶ Existing building 2,180 Sq. Ft.
- ▶ Wood Frame vs. Metal Frame
- ▶ New Team
  - ▶ Donahue Architect
  - ▶ Joyner Construction
- ▶ 5,500 indoor Sq.ft (7,500 Sq.ft. including porches)
- ▶ Dining Seating for 200



# Family Life Center



FLOOR PLAN  
3/20/21 3/20/21

AREA TABULATION	
AREA	SQUARE FOOTAGE
Assembly (NET S.F.)	3,589.00 SQ. FT.
Kitchen (NET S.F.)	6,600.00 SQ. FT.
Conditioned Space (GROSS S.F.)	5,500.00 SQ. FT.
Covered Porch #1	37,600.00 SQ. FT.
Covered Porch #2	49,600.00 SQ. FT.
TOTAL SQ. FT.	7,566.66 SQ. FT.

REVISIONS

REV	DATE	DESCRIPTION

COPYRIGHT © 2021  
ALL RIGHTS RESERVED. NO PART OF THIS WORK  
PROTECTED BY COPYRIGHT LAWS. UNAUTHORIZED  
USE MAY RESULT IN LEGAL ACTION.

DA

DONAHUE ARCHITECTURE, INC.  
1202 SW 17th Street, Suite 201-165  
Ocala, FL 34471  
P 352.867.5148  
E jdm@donahue-arch.com  
FL # AR0017456

Floor Plan

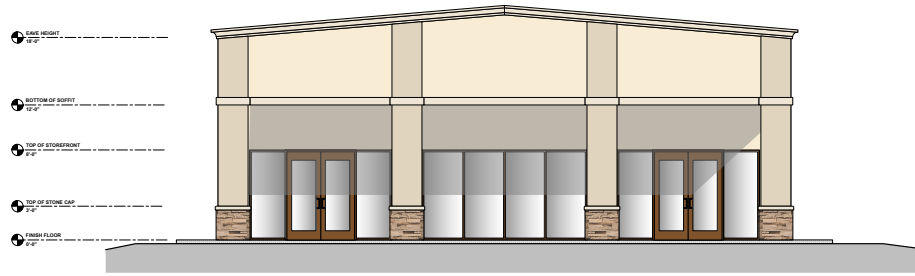
A New Fellowship Hall for  
Faith Presbyterian Church  
5916 NW 39th Avenue  
Gainesville, FL 32606

DATE 07/22/21  
JOB D\_20050

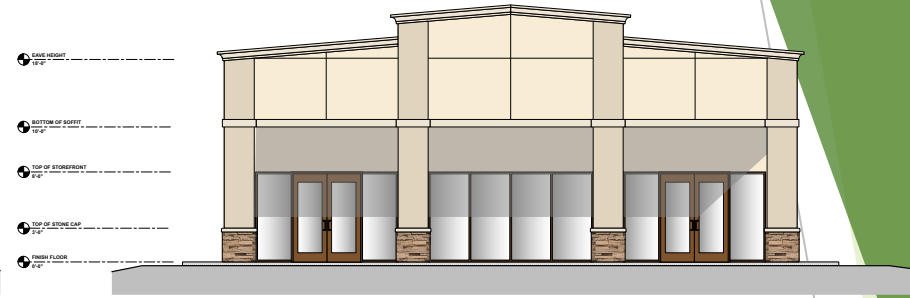
DRAWN BY JG  
CHECKED BY JAD

3  
OF  
15

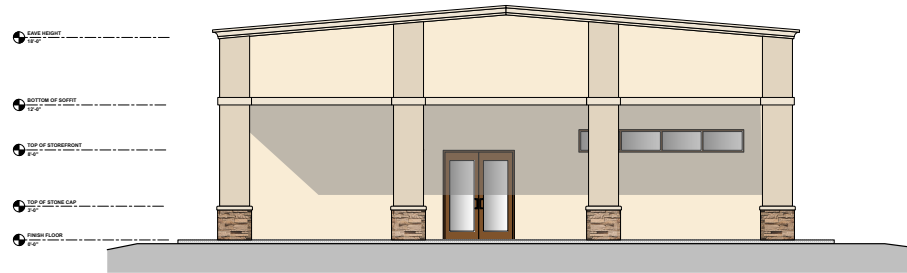
A100  
SOHEMATIC



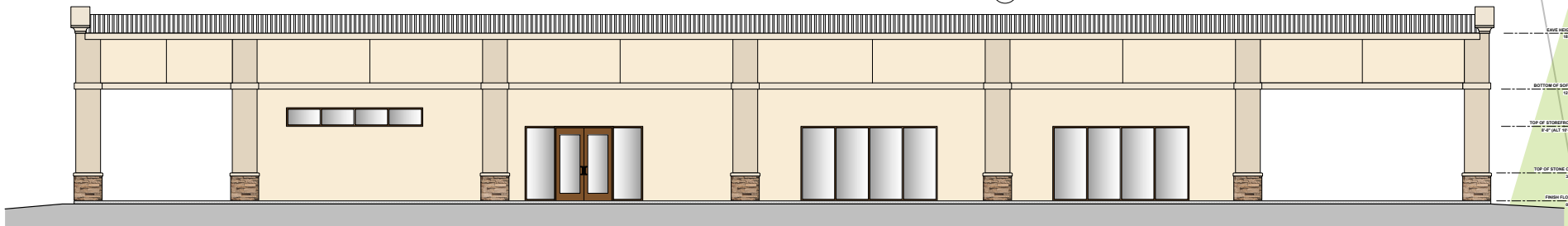
1 NORTH ELEVATION  
SCALE: 3/8" = 1'-0"



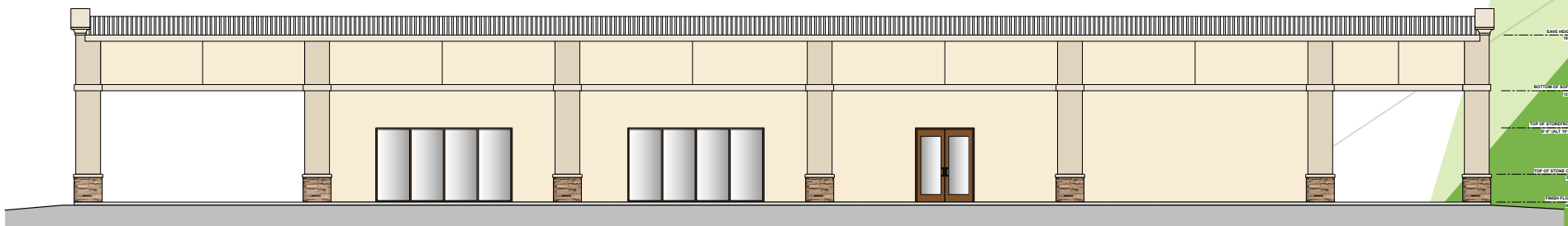
1 NORTH ELEVATION (ALT 1)  
SCALE: 3/8" = 1'-0"



1 SOUTH ELEVATION  
SCALE: 3/8" = 1'-0"



1 EAST ELEVATION  
SCALE: 3/8" = 1'-0"



1 WEST ELEVATION  
SCALE: 3/8" = 1'-0"

REVISIONS		
REV	DATE	DESCRIPTION

COPYRIGHT © 2021  
ALL RIGHTS RESERVED. THESE PLANS ARE  
PROTECTED BY COPYRIGHT LAWS. UNAUTHORIZED  
USE MAY RESULT IN LEGAL ACTION.

**DA**

**DONAHUE ARCHITECTURE, INC.**  
2202 SW 17th Street, Ste 201-165  
Gainesville, FL 32606  
T 352.467.5148  
E john@donahue-arch.com  
FL # AR0017458

**Elevations**

**A New Fellowship Hall for  
Faith Presbyterian Church**  
5916 NW 39th Avenue  
Gainesville, FL 32606

**DATE** 06/28/21  
**JOB** D\_21050  
**DRAWN BY** JAD  
**CHECKED BY** JAD

**A200**  
SCHEMATIC

**5**  
**OF**  
**15**



# Family Life Center

- ▶ After engineering surveys and final drawings are approved the contractor will give us our estimate.
- ▶ We are doing preliminary work in securing a mortgage loan.
- ▶ When we have a final plan, we will begin a building campaign to raise a down payment.
- ▶ We have already received large gifts totaling \$250,000! We hope to significantly limit the amount we borrow.

# Budgeted Expenses 2021-2022

Pastors Expense \$211,609

2020-21 \$133,409

Operations Expense \$161,236

2020-21 \$129,411

Ministries \$43,630

2020-21 \$58,810

Missions \$40,388

2020-21 \$40,388

Building \$35,800 (factoring in FLC mortgage payments)

2020-21 \$9,200

**TOTAL EXPENSES \$492,663**

# Budgeted Income 2021-2022

2020-2021 General Offering \$400,000

YTD Income through

June 2020-2021 \$567,886

July and August should bring that total much higher.

Projecting annual income based on 2020-2021 is challenging. Remove large gifts? Project higher with new staff? Covid related adjustments?

Conservative projection is \$450,000 (\$8,653/wk)

Projected shortfall \$41,693

# Current Assets

Insurance from the fire, our low expenses during COVID and understaffed budget (going from 2 pastors to 0 pastors to 1 pastor in 3 years) are all factors that have built up our current savings.

Checking \$574,857

Money Market \$187,363

We are committed to using these assets for the long-term expansion of God's kingdom in Gainesville and the world.

