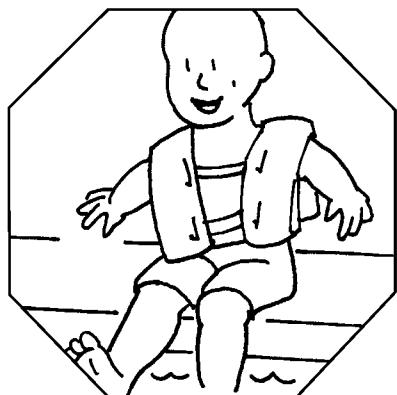
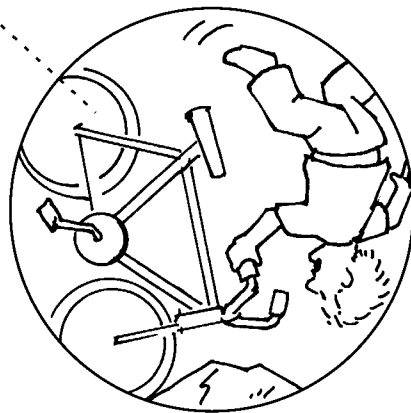
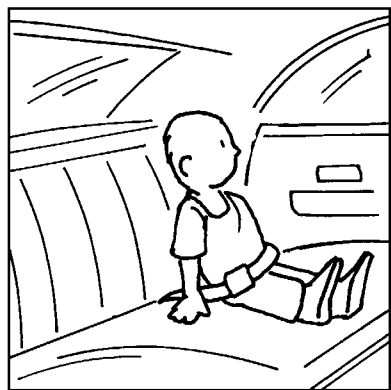
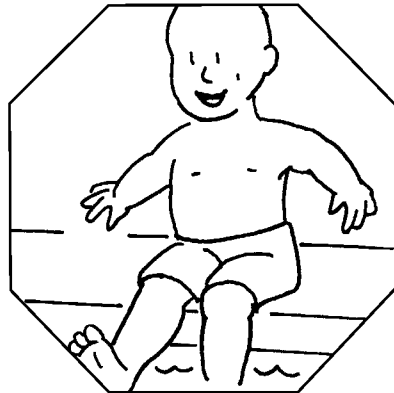


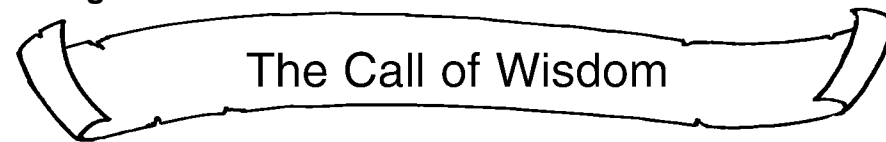
Whoever listens to wisdom,
will live in safety.

Match the opposites.



Ages 3+

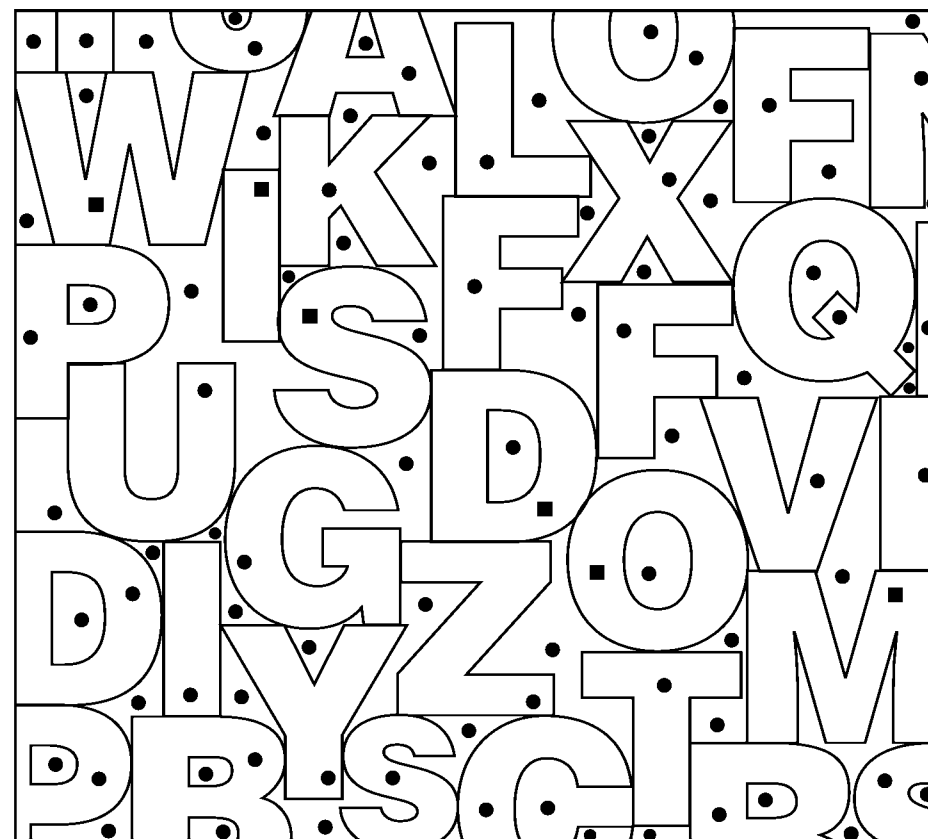
March 22, 2020 • Proverbs 1:20-33



The Call of Wisdom

Proverbs tells about a special word.

Shade in the shapes that have a ■ .



FIRST BAPTIST CHURCH - GONZALES

1217 S Burnside Ave.

(225)647-8575

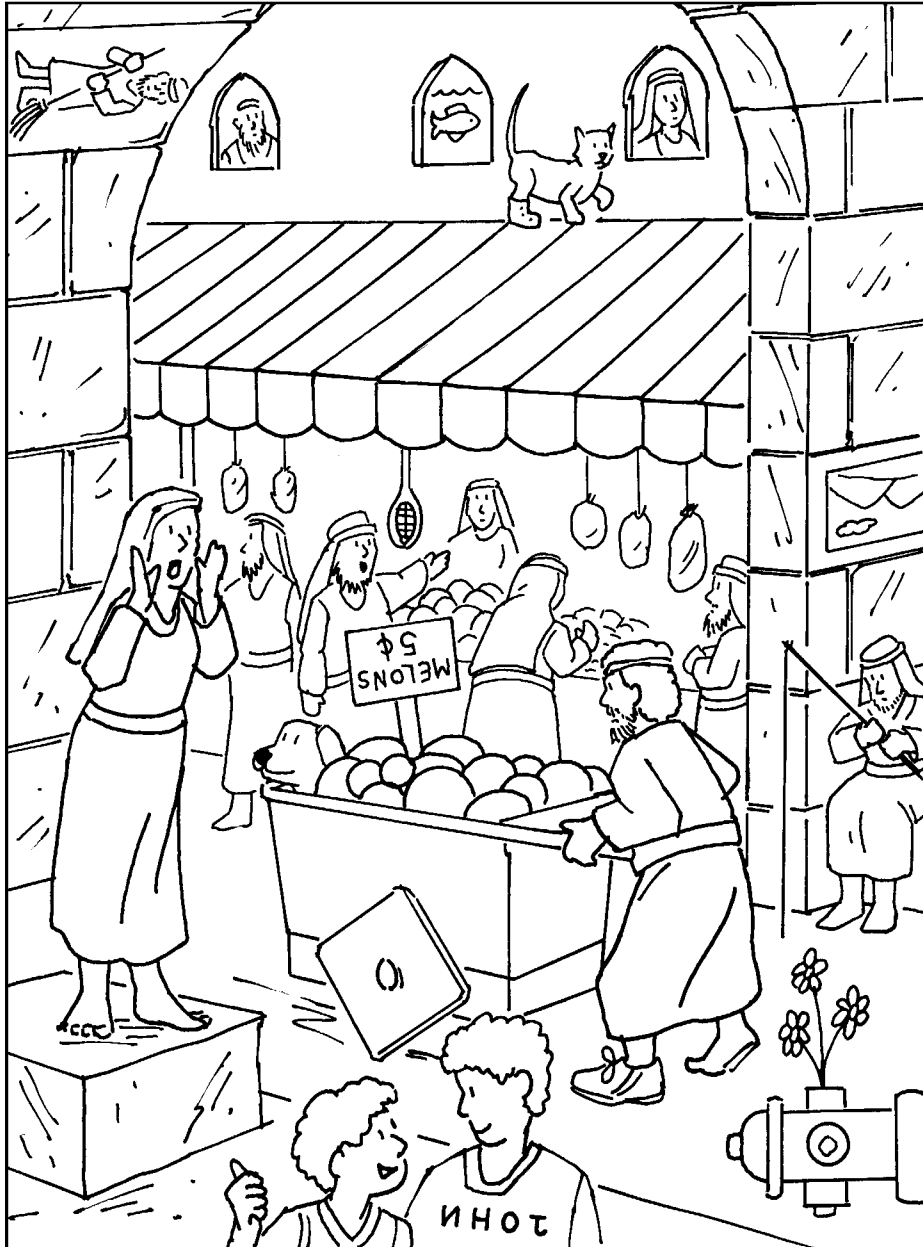
www.fbcg.net

Enter your **SECRET CODE** to unlock games @
games.childrensbulletins.com

SECRET CODE
DFQX59

Wisdom is like a woman calling out
at the gates of the city.

Circle what's wrong in the picture.



Fools do not listen to wisdom.

Find and circle the hidden objects in the picture.

