



Paul tells us what the greatest and best spiritual gift is.

Use the code. Find the number values for each word.
Add them. Which sum is the greatest?

A B C D E F G H I J K L M N O P Q R S T U V W X Y Z
1 2 3 4 5 6 7 8 9 10 11 12 13 14 15 16 17 18 19 20 21 22 23 24 25 26

L =	H =	F =
O =	O =	A =
V =	P =	I =
E =	E =	T =
_____	_____	_____



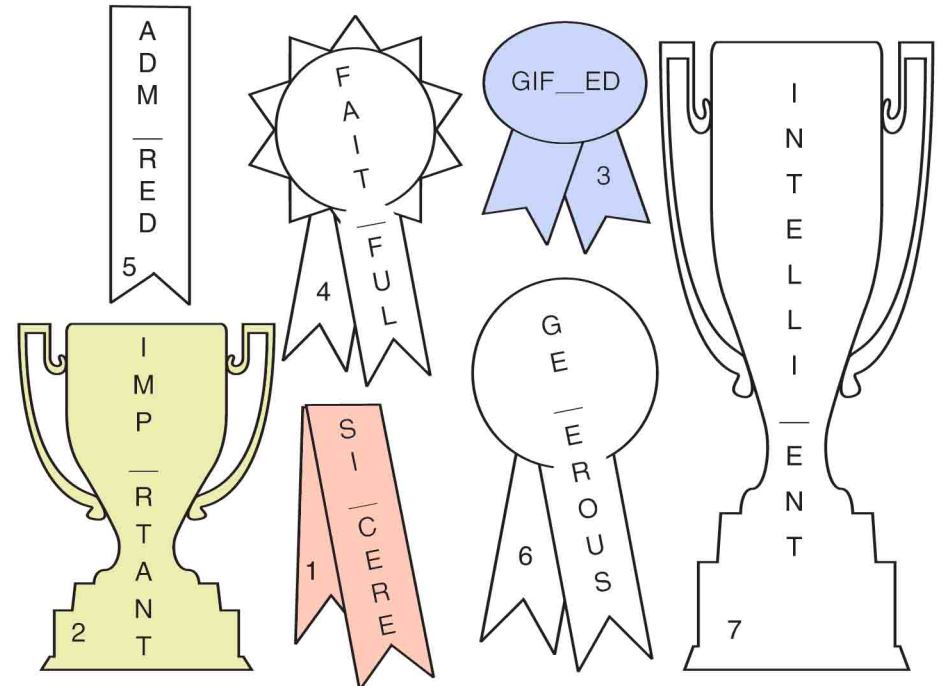
Ages 7+

November 22, 2020 • 1 Corinthians 13:1-13

Love Is Patient and Kind

We may cultivate all sorts of good qualities, but still be ineffective in Christ's service. Paul explains how.

Fill in letters to make words we would like to have describe us.
Then arrange them in order to find what we actually are worth without love.



Without love we are _____
1 2 3 4 5 6 7



FIRST BAPTIST CHURCH - GONZALES

1217 S Burnside Ave.
(225)647-8575
www.fbcg.net

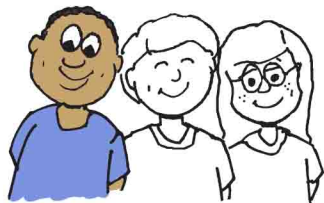
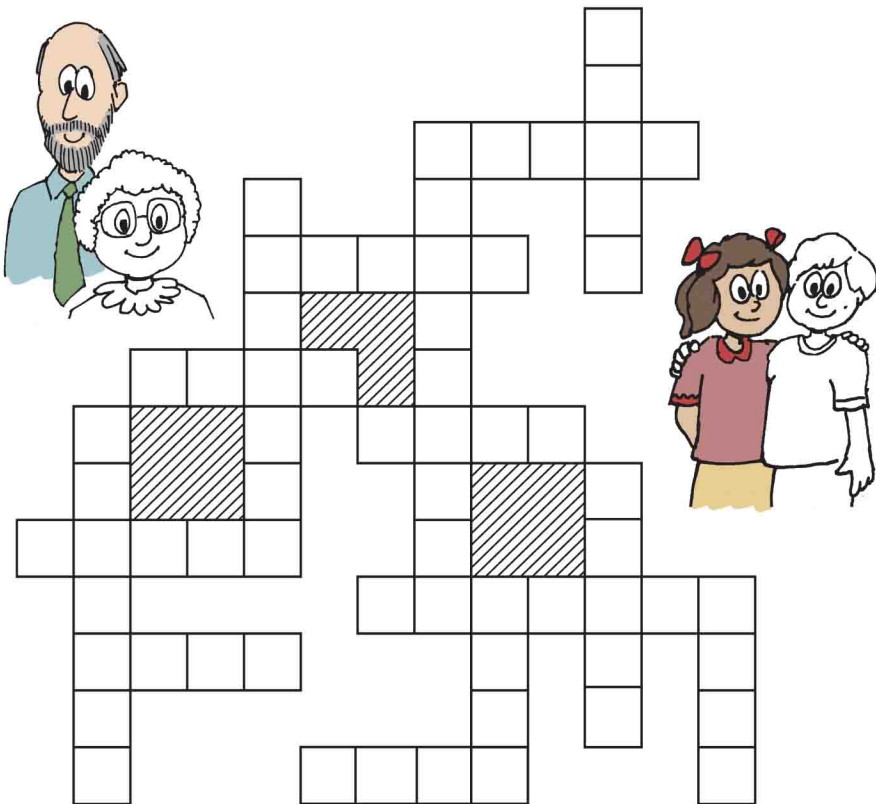
Enter your **SECRET CODE** to unlock games @
games.childrensbulletins.com

SECRET CODE
BRZNQ4

We recognize love because it has certain characteristics.

Fit the words into the boxes. Put a plus sign (+) beside each word that goes in the same direction as the word "love."
Hint: Put the longest words in first!

- | | | | |
|---------------|--------------------------|-----------|-----------------------|
| ___ angry | ___ boast | ___ envy | ___ evil (delight in) |
| ___ fail | ___ hope | ___ love | ___ patient |
| ___ persevere | ___ protect | ___ proud | ___ rude |
| ___ selfish | ___ truth (rejoice with) | ___ faith | |



At one time Paul was a child, then he gradually changed. What did he become?

Follow the step-by-step directions.

C H I L D

Replace the 1st 2 letters with 1 letter to make a word meaning "temperate."

Change 1 letter to make "intelligence."

Change 1 letter to make "belonging to me."

Change 1 letter to make "long, thick hair."

Drop 1 letter to make "an adult male."

