

GRACE BIBLE CHURCH

BIG SUGAR RIVER CANOE TRIP

BIG SUGAR CREEK

PINEVILLE, MISSOURI

JUNE 17-19, 2021

CONTENTS

Schedule	1
Food	2
Packing List	3
Creek Map and Info	4
Directions to Campsite.....	5

Schedule

6:30	Leave
10:30	Set up Camp
11:30	Bus Ride
12:00	Put in Canoes at Powell
6:00	Dinner
7:00	Devotion I
8:00	Hang Out
6:00	Wake Up
7:00	Breakfast
8:00	Devotion II
9:00	Put in at Big Rock
4:00	Bus Ride
6:00	Dinner
7:00	Devotion III
8:00	Hang Out
6:00	Wake up and Clean Up
7:00	Breakfast
8:00	Drive Home
12:00	Arrive Home

Food

Thursday

Breakfast: Grab a breakfast burrito #1 and coffee before you leave.

Lunch: Lunch Pack (jerky, cliff bar, granola bar, trail mix, apple, clementine, water)

Dinner: Brats, sauerkraut, beans, chips, pickles, blueberry cobbler, smores

Friday

Breakfast: Breakfast burrito #2, coffee

Lunch: Lunch pack (jerky, cliff bar, granola bar, trail mix, apple, clementine, water)

Dinner: Hamburgers, sauteed onions and peppers, beans, chips, pickles, smores

Saturday

Breakfast: Breakfast burrito #3, coffee

Lunch: We will be home by then.

Packing List

Mandatory

Tent

Sleeping Bag

Wet and dry clothes for two days

Sandals/Water Shoes

Life Jacket (if you are a young child)

Lawn chair

Optional

Canoe Seat

Sunscreen

Hat

Bug Spray

Water Guns

Fishing Pole and Tackle

Flashlight

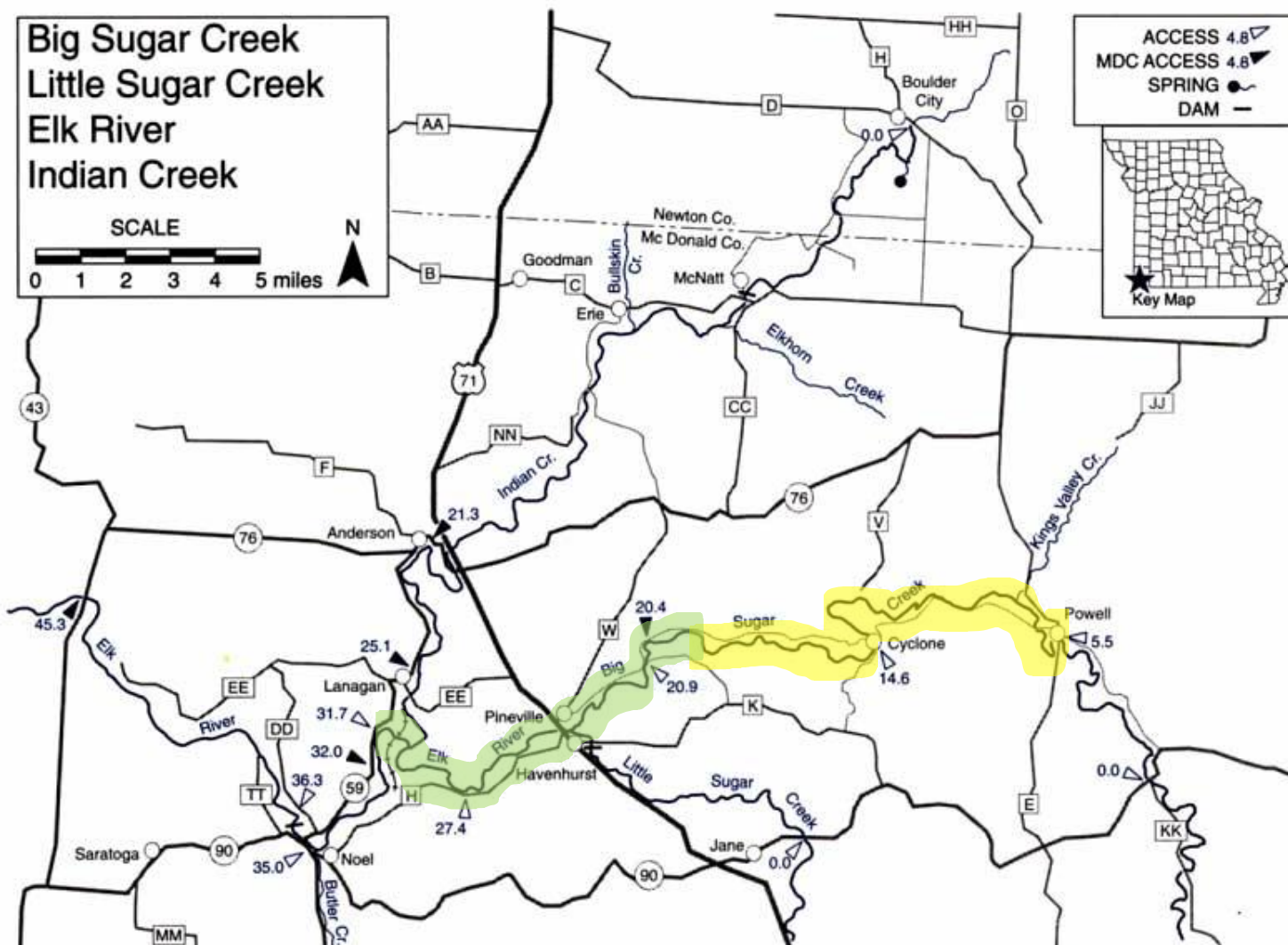
Waterproof bag

Snacks (in addition to those provided)

Creek Map and Info

“The Elk River and its scenic tributary, Big Sugar Creek, have become a favorite float with canoeists in the western part of the state. Big Sugar provides good camping and fishing, and is an unusually clear stream.”

Thursday we will put in a Powell (5.5) and take out at a mile above point 20.4. We will float 15 miles Thursday total. Friday we will float down to the elk river and take out at point 32.0. We will float 12 miles on Friday total. On average 10 miles takes 3.5 hours, so we will have plenty of time for breaks and play.



Directions to Campsite

We are staying at Big Rock Campgrounds. Your GPS should be able to get you to Pineville, Missouri (the last town we will drive through). After getting to Pineville our reception might cut out. Here are directions from Pineville to the campsite:

- Head south on Jesse James Rd toward 8th St
- Turn left onto Big Sugar Creek Rd/County Rd SEW24/Sugar Creek Rd
- Turn right to stay on Big Sugar Creek Rd/County Rd SEW24
- Turn right to stay on Big Sugar Creek Rd/County Rd SEW24

