

"Ignorant Hostility"

Luke 22:63-71

November 22, 2020

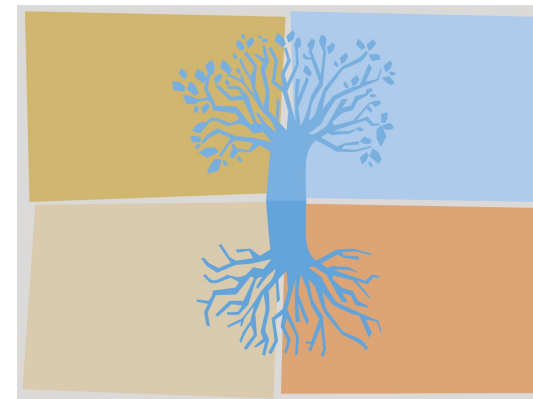
Jay Beuoy, Lead Pastor

Sermon Series: Luke

The Gospel According to Luke

Consider Jesus who endured extraordinary, unjust hostility so that you may endure.

_____, ignorant hostility.



GRACE COMMUNITY CHURCH

November 22, 2020

_____ ignorant hostility.

WE GATHER TO WORSHIP

Welcome & Announcements

Family Chat..... Jay Beuoy

WE APPROACH GOD IN WORSHIP..... Worship Team

WE RECEIVE THE WORD

Scripture & Prayer..... Ryan Williams

Sermon..... Jay Beuoy

WE RESPOND..... Worship Team

News & Information

Hanging of the Greens - We are cancelling the soup and pie supper that was supposed to be held tonight. We are still needing willing people to help with the Hanging of the Greens. Guys are welcome too as we need a few guys to hang decorations up high. If you can help, please come out at 3:30. Hope to see you there. Thank you.

Peanut Butter Drive - Thank you so much for your generous contributions. We donated 129 jars of peanut butter to the food bank!

Operation Christmas Child - Thank you everyone that helped with the donations for shoe boxes or made your own. In total we donated 47 boxes this year.

Nicaragua - Please pray for those in Nicaragua. We raised \$270 for the hurricane donation fund.

Inclement Weather - We are making some changes to how we post for inclement weather. If we ever need to communicate a schedule change due to inclement weather, we will post the information on the church Facebook page, gracegreatbend.org, and our answering machine message on our church phone at 620-792-7814.

Holiday Schedule - Please note the following schedule from now through December:

- Sunday, Nov 22 - Hanging of the Greens - 3:30pm
- Wednesday, Nov 25 - No Awana
- Thursday, Nov 26 - Thanksgiving, church office closed
- Friday, Nov 27 - Church office closed
- Wednesday, Dec 23 - No Awana
- Thursday, Dec 24 - Christmas Eve Service 5:30pm
- Friday, Dec 25 - Christmas Day, church office closed
- Sunday, Dec 27 - No Sunday school or youth group
- Monday, Dec 28 - Church office closed
- Wednesday, Dec 30 - No Awana
- Sunday, Jan 3 - No Sunday school or youth group

Missionary of the Month

The Persecuted Church - A prayer. "Thank you Father for the endurance and faith of our persecuted brothers and sisters. Grant them peace as they mourn losses of loved ones, jobs, or property. Heal those who continue to suffer and provide for those who lack daily necessities of life. Thank you for their example as they continue to pray for and share the Gospel with those who hate them and want to silence their witness. Help me to love as they love."

Family Updates and Prayer Concerns

Prayer Concerns (New):

Miraya Starnes' grandma passed away
Jan Peterson - health
Karl McCulley - health
Brenda McCulley - health
Brian Mitchell - health

Ongoing Concerns

Bill Fleske - health
Janet Fleske - health
Ruth Claphan - health
Don Wagner's family in Nicaragua
Karen Merryman - recovery from surgery

Missionary of the Month

Persecuted Church

Ongoing Cancer Concerns

Elizabeth Doerschlag
Michele Greene
Sara Hames
Karen Merryman

Weekly Calendar

TODAY	9:15am	Sunday School/ABF
	10:30am	Worship Service
	3:30pm	Hanging of the Greens
	5:00pm	Msm (Middle School) Youth Group
	5:45pm	Hsm (High School) Youth Group
Tuesday	6:30am	"It's A Guy Thing" Men's Bible Study
Thursday		Church Office Closed
Friday		Church Office Closed
Saturday	7:00am	"Men to Men" Bible Study

Financial Information

Last Sunday's Attendance: 100
Sunday School & ABF: 73
Last Sunday's Offering: \$8,308.30
Weekly Budget: \$8,846.15

Monthly Budget: \$38,333.33
Month-to-Date Offering: \$35,411.33
Last Month (October) : \$24,861.93

Contact

Grace Community Church
210 McKinley St.
Great Bend, KS 67530
(620) 792-7814
www.gracegreatbend.org
[facebook.com/GraceGreatBend](https://www.facebook.com/GraceGreatBend)
Twitter/Instagram: @gracegreatbend