



Harvest

FELLOWSHIP

Loving God, Loving People, Making Disciples



Financial Snapshot

Assets (Feb 2020)

Cash / Investments

Operating Account	\$25K
Savings	\$4K
Mercy Ministry	\$7K
PCA Foundation	\$98K

Property Value (2018 Tax Assessment)

Main & Annex	\$535K
Duplex	\$204K

Assets (Jan 29, 2021)

Cash / Investments

Operating Account	\$27K
Savings	\$4K
Mercy Ministry	\$7K
PCA Foundation	\$111K

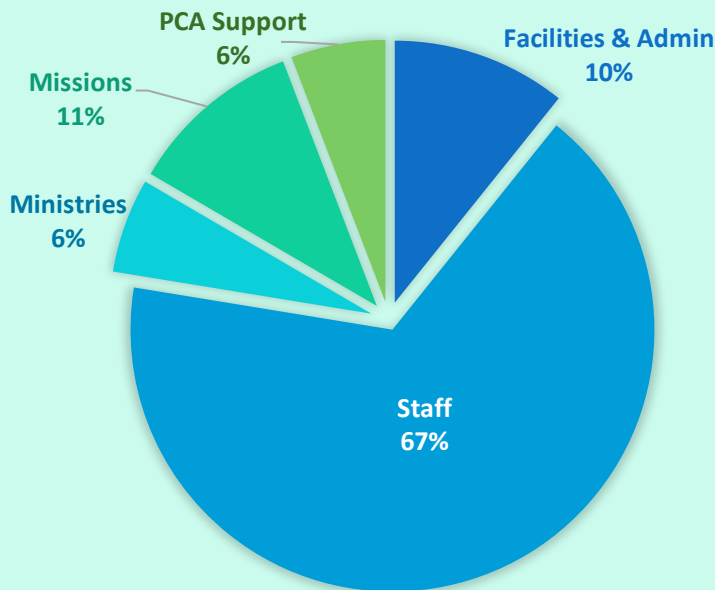
Property Value

Reassessed in 2021

2020 Actual vs. 2021 Budgeted Expenses

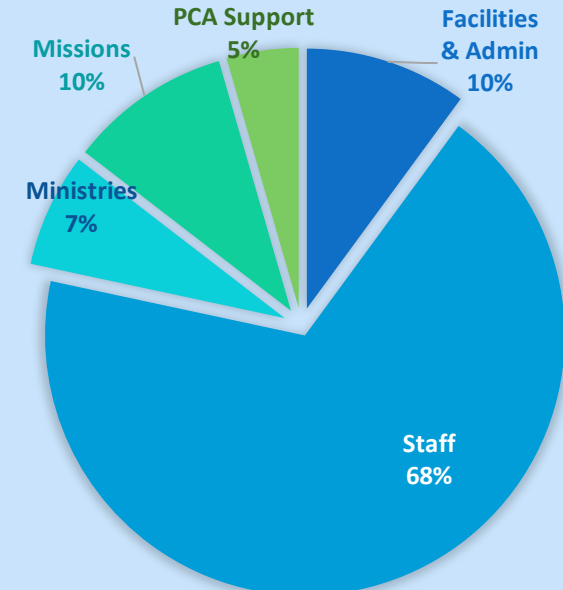
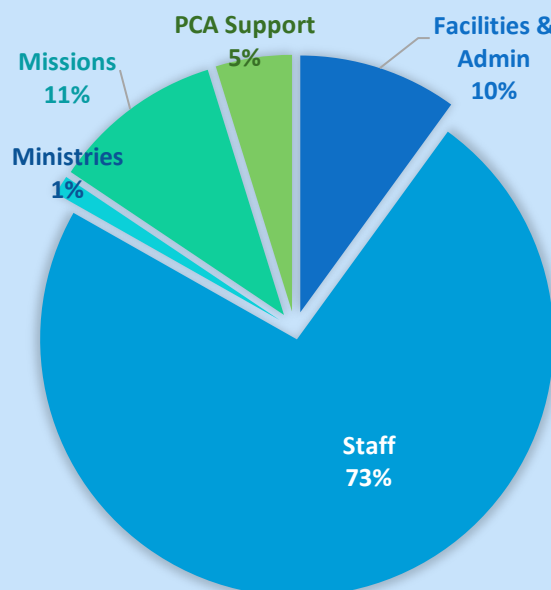
2020 Actual \$226K

Staff	\$149K
Missions	\$27K
Facilities & Admin	\$24K
Ministries	\$13K
PCA Support	\$13K



2021 Budgeted Essential - \$250K Opportunities - \$18K

Staff	\$183K	
Missions	\$27K	
Facilities & Admin	\$25K	\$2K
Ministries	\$3K	\$16K
PCA Support	\$12K	



How does 2021 compare to past years?

2018 Actual Expenses

Ministry	\$19K
Missions	\$32K
PCA Support	\$14K
Facilities & Admin	\$37K
Staff	\$184K

Total = \$284K

Average Attendance = 100

2021 Budgeted Expenses

Ministry	\$19K
Missions	\$27K
PCA Support	\$12K
Facilities & Admin	\$27K
Staff	\$183K

Total = \$268K

Average Attendance = 68
Livestream Attendance = ??

Major Facilities Maintenance

Scheduled for 2021 (PCA Foundation Acct)

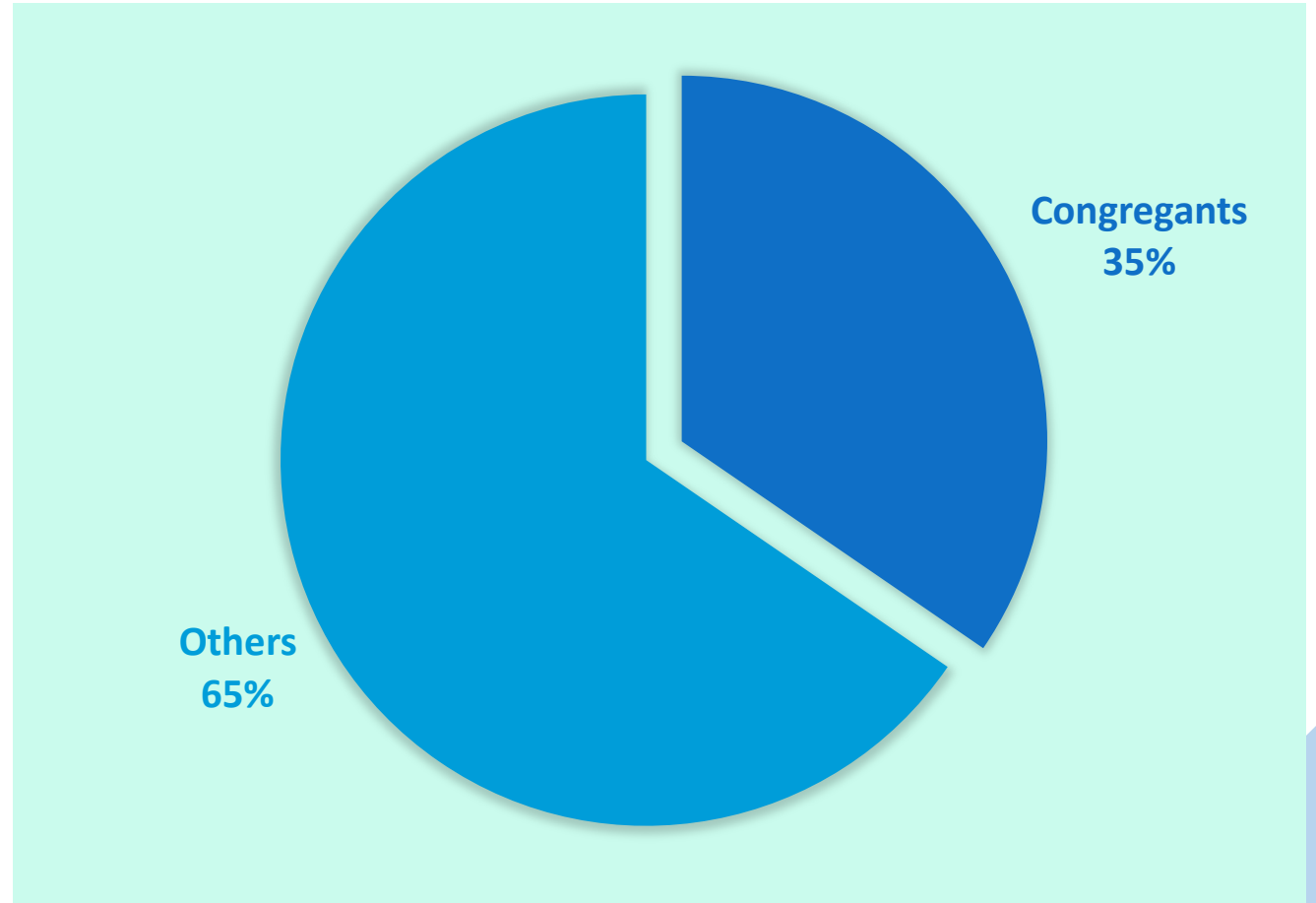
- Replace Roof: \$20K

Deferred

- Repave Parking Lot: \$30-40K
- Replace Annex: ???

2020 Mercy Ministry

Offerings Received	\$8,388
Total Support Provided	\$8,196
Congregants	\$2,833
Others	\$5,363



2021 Budgeted Expenses v. Projected T&O

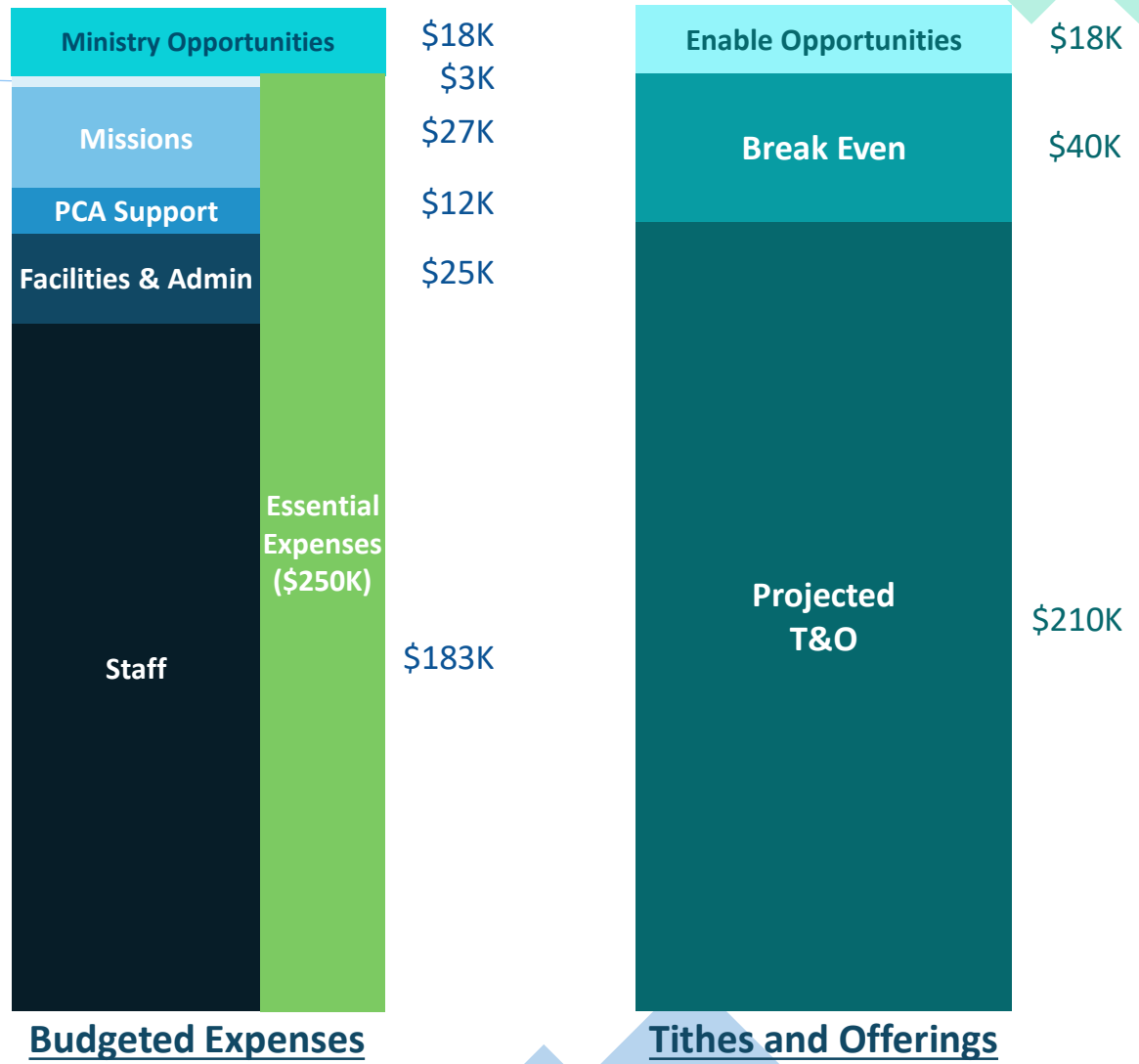
Planned Ministries

Planned Ministries include:

Youth Ministry	\$25/week
Worship Service Support	\$30/week

Ministry Opportunities include:

Children & Youth Ministry	\$30/week
Congregational Care	\$110/week
Community Outreach	\$25/week
Adult Education & Discipleship	\$15/week
Leadership Training	\$130/week
Facilities Upgrades	\$40/week



Budgeted Expenses

Tithes and Offerings

How Can I Get Involved?

Enable Opportunities	\$18K → \$350/week
Break Even	\$40K → \$770/week
Projected T&O	\$210K → \$4,040/week

If you are giving regularly, consider increasing your giving.
If you aren't giving regularly, consider starting today.

To break even, we need:

2 families @ \$100/week
and 7 families @ \$50/week
and 11 families @ \$20/week
Total = \$770/week

To enable ministry opportunities, we need:

1 family @ \$100/week
and 3 families @ \$50/week
and 5 families @ \$20/week
Total = \$350/week

Every dollar you give goes directly to loving God, loving people, and making disciples!

Three Ways to Give

1. Bring your tithes and offerings with you on Sunday.

Drop a check or cash in the collection plate at the entrance to the sanctuary.

2. Mail a check to:

Harvest Fellowship

P.O. Box 475

Lusby, MD 20657

3. Set up Harvest Fellowship as an on-line bill pay recipient with your bank.

Most banks provide a “Bill Pay” feature at no additional cost.

You set the amount and delivery date. It can be one-time or recurring.

The bank prints a check and mails it to Harvest.

Checks are received as part of the weekly T&O.

Several families do this regularly.

In all cases, makes checks payable to Harvest Fellowship.



Harvest

FELLOWSHIP

Loving God, Loving People, Making Disciples

