

COME, THOU FOUNT

From "Resolved Music, Vol. II" by ENFIELD
resolvedmusic.org

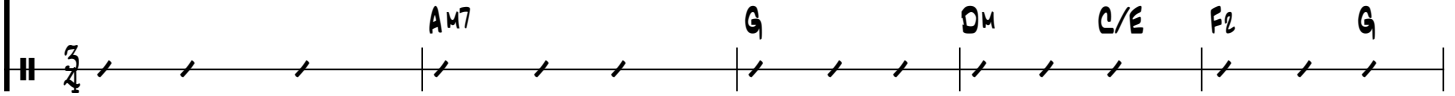
Text: Robert Robinson, Alternate v 4 Bob Kauff
Music: Asahel Nettleton
Arr.: Ryan Foglesong and Wil Pearce

♩=74

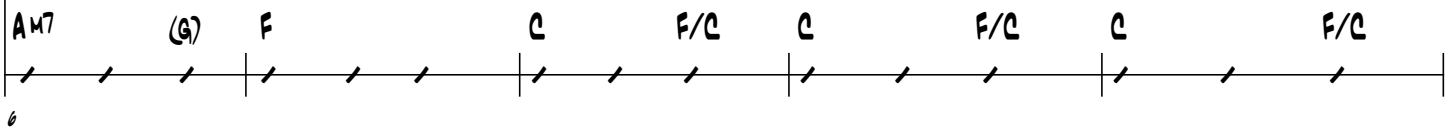
(INTRO)



SOLO MANDO, AC. GTR.



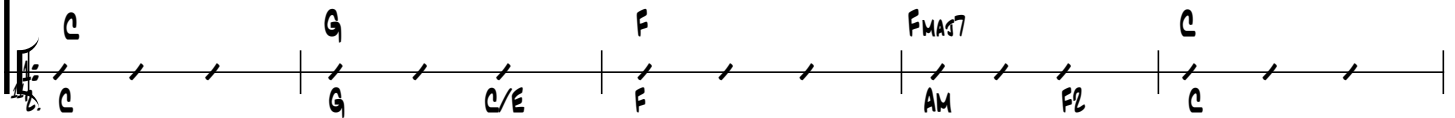
1. COME, THOU
(2. HITH - ER) -



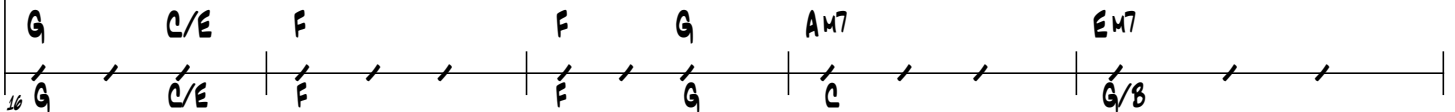
(VERSES 1 & 2)



FOUNT OF EV - 'RY BLESS - ING, TUNE MY HEART TO SING THY GRACE; STREAMS OF MER - CY, NEV - ER
TO THY LOVE HAS BLEST ME; THOU HAST BROUGHT ME TO THIS PLACE; AND I KNOW THY HAND WILL



CEAS - ING, CALL FOR SONGS OF LOUD - EST PRAISE: TEACH ME SOME ME - LO - DIOUS SON - NET, SONG BY
BRING ME SAFE - LY HOME BY THY GOOD GRACE. JE - SUS SOUGHT ME WHEN A STRANG - ER, WAND - O'RING



COME, THOU FOUNT

2

FLAM - ING TONGUES A - BOVE; PRAISE HIS NAME! I'M FIXED UP ON IT. NAME OF GOD'S RE - DEEM - ING
 FROM THE FOLD OF GOD: HE, TO RES - CUE ME FROM DAN - GER. BOUGHT ME WITH HIS PRE - CIOUS

F FMA7 C G F
 F/A C/G F C G F

1. (LINK)

LOVE. 2. HIGH - ER -

C G F FMA7

2. (RE-TRO)

BLOOD.

AM7 G DM7 C/E F2 G

3.0 TO

AM7 (G) F C F/C C

(VERSE 3)

GRACE HOW GREAT A DEBT - OR DAI - LY I'M CON - STAINED TO BE! LET THY GRACE, NOW, LIKE A

p *me*

C G/C F/C C G/B AM
 (PIANO & SOFT PERC.) (+ HIGH BASS)

COME, THOU FOUNT

45 FET - TER, BIND MY WAN - D'RING HEART TO THEE: PRONE TO WAN - DER, LORD, I FEEL IT, PRONE TO

G6sus4 G Dm7 F2 G Am7 E7

48 LEAVE THE GOD I LOVE: HERE'S MY HEART, O TAKE AND SEAL IT: SEAL IT FOR THY COURTS A -

F C/E Dm7 F/G C G C/E F

(LINK)

SOVE. 4. OH THAT

C G F G Asus4 A

(VERSE 4)

57 DAY, WHEN FREE FROM SIN - NING, I SHALL SEE THY LOVE - LY FACE: FULL AR -

D D2/C# Bm Bm/A Bm/G# G4b

61 RAYED IN BLOOD - WASHED LI - NEN, HOW I'LL SING THY SOV - REIGN GRACE. COME, MY

D/F# D A/C# A G E7 D/F# G A

