



**GENERAL CONTRACTOR/SUBCONTRACTOR:**

**PARADIGM CONSTRUCTION COMPANY, LLC**

1000 W. WILSHIRE BLVD., SUITE 122

NICHOLS HILLS, OK 73116

(405) 341.9121

[steve@theparadigmcompanies.com](mailto:steve@theparadigmcompanies.com)

[www.theparadigmcompanies.com](http://www.theparadigmcompanies.com)

**BID OPPORTUNITY EVALUATION FACTORS**

Steve Crain is President of "The Paradigm Companies" which consists of Paradigm Construction Company, Paradigm Development Group, Paradigm Real Estate Investments, Paradigm Custom Homes, and Paradigm Roofing Company. Steve has a degree in Civil Engineering from the University of Oklahoma and is a licensed Professional Engineer (P.E.) in the state of Oklahoma.

Steve has diverse experience in:

- Commercial, Transportation and Residential Construction
- Commercial and Residential Roofing
- Commercial and Residential Developments
  - Has owned/developed 400 acres of property in Oklahoma City
  - Is a Real Estate Developer and Development Consultant
- Construction Inspection and Management (Soils, Concrete, Asphalt, Post-Tension, etc...)
- Geotechnical Engineering and Design
- Environmental Engineering and Site Assessments
- Land Evaluations and Value Analysis

**CONSTRUCTION EXPERIENCE**

Paradigm Construction Company, LLC is a General Contracting firm specializing in Commercial, Retail, Tenant/Owner Build-outs, Office, Medical, Restaurant, Redevelopment, Catastrophe Restoration and Insurance Claims. Paradigm is a small firm but has a wide range of expertise and disciplines. Paradigm is also frequently hired in a support role as a Subcontractor to large in-state and out-of-state construction companies. Most of our Sub's have been with us for about 10 years and we are very efficient with fair pricing. We have General Liability and Workers Comp. Steve's diverse experience in the Construction Materials Testing, Geotechnical Engineering, Development and Construction along with his (P.E.) are rare qualities to find in the Construction Industry and adds credibility and value to any Owner's or General Contractor's project.

## **PROJECTS**


Paradigm is experienced and adapts well to fast track projects and is solution oriented. Paradigm clearly communicates schedules and timelines to clients and will not lead them astray.

Recent projects include:

- ◆ Build-outs for a full-service Real Estate Investment Trust (**REIT**) that owns more than 125 million square feet of retail space across the Country and traded on the 
- ◆ Build-outs/Remodels for  The UNIVERSITY of OKLAHOMA
- ◆ 84,000 sf Assisted Living Center – Colorado
- ◆ 64,000 sf Assisted Living Center – Oklahoma
- ◆ 50,000 sf Holiday Inn Express - Kansas
- ◆ Loves Travel Stops – Multiple Locations
- ◆ Chickasaw Nation Loves Newcastle Casino – Oklahoma
- ◆ \$4M Townhouse project in historic SOSA area
- ◆ Tenant build-out for new Advanced Aesthetics medical offices
- ◆ OU Health Science Center Urology Clinic Remodel - Oklahoma
- ◆ ULTA Beauty Store – OKC, OK



ALL THINGS BEAUTY. ALL IN ONE PLACE.™

- ◆ Fast Track ~ 90-day turnaround for demo, plumbing, electrical, hvac, and finished shell.
  - ◆ Gold Elements – OKC, OK
- 
- ◆ Project at Penn Square Mall and worked closely with Simon Malls to accomplish a Fast Track project timeline of 5 weeks!
  - ◆ New Office Space - interior build-out of HWH Construction OKC Headquarters – OKC, OK
    - ◆ Oldest General Contracting firm in Texas.
  - ◆ 16,500 sf Commercial Office Building/Warehouse – Edmond, OK
  - ◆ Waters Edge Winery – 6,000 sf build-out and reconstruction of 100-year old building in Automobile Alley – OKC, OK
  - ◆ Multi-Tenant Building – 14,000 sf build-out and reconstruction of 100-year old building in Automobile Alley – OKC, OK
  - ◆ Retail Spaces – interior build-out at Penn Square Mall and Belle Isle Shopping Center – OKC, OK
  - ◆ Medical Space - January Chiropractic – Edmond, OK
  - ◆ L.A. Fitness - Edmond, OK – Subcontractor to Timberlake Construction
    - ◆ The GC called us needing immediate Subcontractor services. Paradigm was on-site that day to assess the project and was performing the work the next day.
  - ◆ Subaru - Edmond, OK
  - ◆ Modern Residence - OKC, OK
  - ◆ Complete reconstruction/remodel of a 150-year old Church building into Land Run Records – Nashville, TN

### **CAPABILITIES**

We are often the “go to” guys when a timely solution is required for a complex project. Steve Crain (Owner/Manager) is a registered Professional Engineering with a Civil Engineering degree from OU. Steve’s engineering career was spent on very large commercial and transportation construction projects in multiple states including many of the OU projects in Norman and Tulsa and including many of the City of Tulsa “Vision 2025” projects. Steve’s P.E. License along with his engineering, construction, construction inspection/testing, and real estate development expertise sets Paradigm apart from other Contractor’s or Subcontractor’s and has been a determining factor for Clients selecting Paradigm.

The 100-year old 14,000 sf multi-tenant building, in downtown OKC, was in poor condition and very complex and we performed a total renovation and build-out. We had to gut, install all new electrical/plumbing/HVAC and bring up to current code. The elevator shaft would not fit within the structures 2-story roof height. We had to cut the concrete roof and design and construct structural supports and a custom shaft that would accommodate the elevator system.

The 150-year old “Historic Preservation” Church building in Nashville, TN was dilapidated and required a complete renovation. The entire roof beam structure was sagging and twisted from past tornados and required a design solution that would provide a sound structural roof system. We had to gut, install all new electrical/plumbing/HVAC and bring up to current code with a complete build-out.

### **APPROACH**

On-call or short-notice is common with many Construction projects. The majority of risks/problems are associated with poor communication with Clients and a poor understanding of the Scope of Work. Paradigm communicates clearly and timely with its Clients to fully understand the Scope of Work and has a proven track record in adjusting to changes in Timelines and Scopes of Work. Problems will periodically arise in Construction, it is the nature of the beast. However, it is how a company “responds” to problems that sets it apart from the others. It is our opinion and practice that risks/problems should be “run to” and addressed immediately, which will help minimize/neutralize further risk/problems.

### **GOING CONCERN**

Paradigm is solely owned and managed by Steve Crain who is a licensed Professional Engineer (P.E.). Steve worked for and managed several engineering offices in multiple states throughout his career prior to starting the various Paradigm companies he now owns and manages. Paradigm has never filed bankruptcy or been sued. Paradigm is centrally located in Nichols Hills, OK and manages projects across the state and out of state.

## **PROJECT PHOTOS**

### **50,000 SF HOLIDAY INN EXPRESS - KANSAS**



### **ULTA BEAUTY STORE - OKLAHOMA**





84,000 SF ASSISTED LIVING CENTER (METAL FRAME & TRUSSES) - COLORADO















**64,000 SF ASSISTED LIVING CENTER (FRAMING STAGE) - OKLAHOMA**

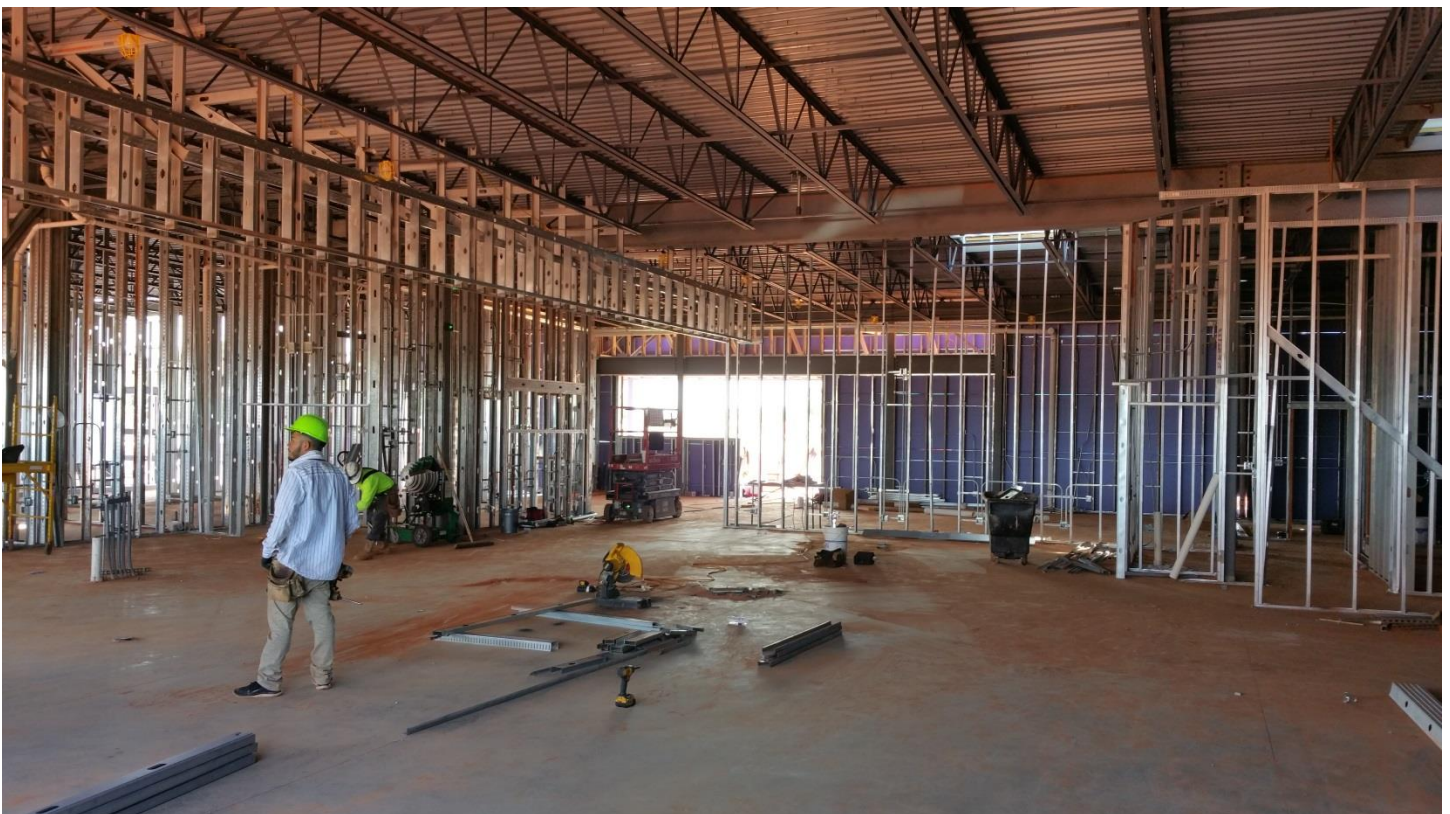


**64,000 SF ASSISTED LIVING CENTER (COMPLETED) – OKLAHOMA**





## LOVES TRAVEL STOP – OKLAHOMA







CHICKASAW NATION LOVES NEWCASTLE CASINO – OKLAHOMA





